

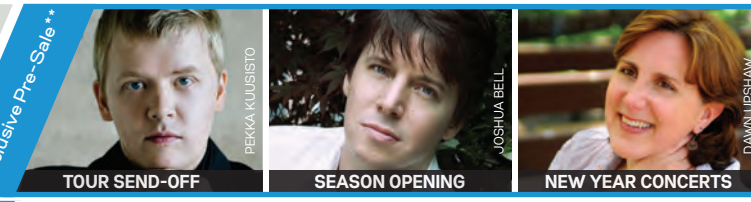
# 2016-17 CLASSICAL SEASON

## Season Packages at a Glance

Use this grid to find the programs and dates included in each series package. Package titles are listed across the top of the grid.

CONCERTS / CONDUCTORS / ARTISTS / PROGRAMS

	COFFEE CONCERTS				FRIDAY (ALL CONCERTS 8PM)					SATURDAY (ALL CONCERTS 8PM)					MINI SERIES				
	Coffee Full (14) Thu 11am	Intermezzo (7) Thu 11am	Prelude (7) Thu 11am	Coffee Matinee (3) Sun 2pm	Fri Full (24)	Fanfare (12)	Encore (6)	Ovation (6)	Bravo (6)	Forte (5)	Sat Full (18)	Staccato (11)	Presto (7)	Vivace (7)	Allegro (5)	Inside the Classics (3) 8pm	Saturdays at Six (2) 6pm	Symphony in 60 (2) Thu 8pm	Exclusive Pre-Sale**
AUG	European Tour Send-Off Osmo Vänskä, conductor / Pekka Kuusisto, violin STUCKY Rhapsodies for Orchestra / PROKOFIEV Violin Concerto No. 1 / BEETHOVEN Symphony No. 5																		
SEP	Season Opening: Osmo Vänskä and Joshua Bell Osmo Vänskä, conductor / Joshua Bell, violin LEVIN <i>Blur</i> / TCHAIKOVSKY Violin Concerto / BRAHMS Symphony No. 2 Season Opening Dinners are being held as a fundraiser in support of artistic excellence and award-winning education and community engagement programs of the Minnesota Orchestra. See pricing for details.																		
OCT	Vänskä Conducts Paulus Mass Osmo Vänskä, conductor / Kathy Kienzle, harp / Michael Gast and Brian Jensen, horn Minnesota Chorale BACH Brandenburg Concerto No. 1 / GINASTERA Concerto for Harp and Orchestra / PAULUS Mass for a Sacred Place																		
NOV	Celebrating Skrowaczewski: Bruckner Symphony No. 8 Stanislaw Skrowaczewski, conductor BRUCKNER Symphony No. 8																		
DEC	Josefowicz Performs John Adams Edward Gardner, conductor / Leila Josefowicz, violin BERLIOZ Overture to <i>Benvenuto Cellini</i> / RAVEL Suite No. 2 from <i>Daphnis and Chloe</i> / ADAMS <i>Scheherazade 2</i>																		
JAN	Handel's Messiah Douglas Boyd, conductor / Minnesota Chorale HANDEL <i>Messiah</i>																		
FEB	It's A Wonderful Life Justin Freer, conductor <i>It's a Wonderful Life</i> Complete film with Orchestral accompaniment.																		
MAR	New Year's Celebration Concerts Osmo Vänskä, conductor / Dawn Upshaw, soprano We've got a glass of musical champagne with your name on it, as superstar Dawn Upshaw and the Orchestra offer brilliant tunes from the American songbook to celebrate 2017.																		
APR	Osmo Vänskä and Alisa Weilerstein Osmo Vänskä, conductor / Alisa Weilerstein, cello AHO <i>Geja</i> , Chinese Images for Orchestra / DVORÁK Cello Concerto / SIBELIUS Symphony No. 5																		
MAY	Rachmaninoff's Piano Concerto No. 2 Roderick Cox, conductor / Joyce Yang, piano DEBUSSY <i>Prelude to The Afternoon of a Faun</i> / RACHMANINOFF Piano Concerto No. 2 / TCHAIKOVSKY Symphony No. 4																		
JUN	Sir Neville Marriner Returns Sir Neville Marriner, conductor MENDELSSOHN <i>The Hebrides Overture (Fingal's Cave)</i> / BEETHOVEN Symphony No. 1 / DVORÁK Symphony No. 8																		
JUL	Inside the Classics: Love in a Time of War Sarah Hicks, conductor / Sam Bergman, host and viola PROKOFIEV <i>Romeo and Juliet</i>																		
AUG	Future Classics: Emerging Composers Spotlight Osmo Vänskä, conductor / Kevin Puts, Composer Institute director Join us for this showcase of fresh new works by some of today's brightest up-and-coming composers!																		
SEP	Russian Nights Santtu-Matias Rouvali, conductor / Behzod Abduraimov, piano TCHAIKOVSKY <i>Romeo and Juliet Fantasy-Overture</i> / RACHMANINOFF Rhapsody on a Theme of Paganini SHOSTAKOVICH Symphony No. 6																		
OCT	Hugh Wolff Conducts Mendelssohn Hugh Wolff, conductor / Karen Gomyo, violin ADÈS Dances from <i>Powder Her Face</i> / BARTÓK Violin Concerto No. 2 / MENDELSSOHN Symphony No. 3, <i>Scottish</i>																		
NOV	Inside the Classics: Bartók's Farewell Sarah Hicks, conductor / Sam Bergman, host and viola BARTÓK Concerto for Orchestra																		
DEC	Mozart and Beethoven Han-Na Chang, conductor / Simone Porter, violin MOZART Symphony No. 36, <i>Linz</i> / MENDELSSOHN Violin Concerto / BEETHOVEN Symphony No. 2																		
JAN	Stravinsky's Rite of Spring Osmo Vänskä, conductor / Rafal Blechacz, piano Program A: BRAHMS Piano Concerto No. 1 / STRAVINSKY <i>The Rite of Spring</i> / Program B: STRAVINSKY <i>The Rite of Spring</i>																		
FEB	Vänskä Conducts Schubert Osmo Vänskä, conductor / Alban Gerhardt, cello / Susie Park, violin Adam Kuenzel and Wendy Williams, flute BACH Brandenburg Concerto No. 4 / ELGAR Cello Concerto / SCHUBERT Symphony in C major, <i>The Great</i>																		
MAR	Edo de Waart Returns Edo de Waart, conductor / Michelle Breedt, mezzo / Peter Auty, tenor Andrew Foster-Williams, bass-baritone / Minnesota Chorale ELGAR <i>The Dream of Gerontius</i>																		
APR	Lise de la Salle Plays Ravel Ludovic Morlot, conductor / Lise de la Salle, piano DUTILLEUX <i>Sounds, Space, Movement (The Starry Night)</i> / RAVEL Piano Concerto in G major PROKOFIEV Symphony No. 5																		
MAY	Haydn and Mozart Juraj Valcuha, conductor / Michael Gast, horn HAYDN Symphony No. 85, <i>La Reine</i> / MOZART Horn Concerto No. 3 BRITTEN <i>Four Sea Interludes</i> from <i>Peter Grimes</i> / RAVEL <i>La Valse</i>																		
JUN	Erin Keefe Plays Mozart Osmo Vänskä, conductor / Erin Keefe, violin / Matthew Lipman, viola LUTOSLAWSKI <i>Little Suite</i> / MOZART Sinfonia concertante for Violin, Viola and Orchestra HINDEMITH <i>Mathis der Maler</i> Symphony																		
JUL	David Zinman Returns: Also Sprach Zarathustra David Zinman, conductor / Anthony Ross, cello Program A: WAGNER Overture to <i>Tannhäuser</i> / BLOCH <i>Schelomo</i> , Hebraic Rhapsody for Cello and Orchestra STRAUSS <i>Also sprach Zarathustra</i> / Program B: STRAUSS <i>Also sprach Zarathustra</i>																		
AUG	Mozart and Debussy Juanjo Mena, conductor / Ingrid Fliter, piano FALLA Interlude and Dance from <i>La Vida Breve</i> / MOZART Piano Concerto No. 23 / DEBUSSY <i>Images</i>																		
SEP	Season Finale: Vänskä Conducts Mahler's Second Osmo Vänskä, conductor / Marc-André Hamelin, piano Camilla Tilling, soprano / Sasha Cooke, mezzo / Minnesota Chorale HAYDN Piano Concerto in D major / MAHLER Symphony No. 2, <i>Resurrection</i>																		
OCT	Inside the Classics: Becoming Legend Sarah Hicks, conductor / Sam Bergman, host and viola DVORÁK Symphony No. 7																		



## SUBSCRIBE TODAY!

**PRICING** Save up to 20% off regular ticket prices\*\*\*

Series	VIP	Sec 1	Sec 2	Sec 3	Sec 4	Young Listener (ages 6-17)
<b>COFFEE CONCERTS</b>						
Thu Intermezzo/Prelude (7)	\$386	\$331	\$270	\$196	\$140	\$84
Thu Full (14)	\$772	\$662	\$540	\$392	\$280	\$168
Sun Matinee (3)	\$166	\$142	\$116	\$84	\$60	\$36
<b>FRI 8PM</b>						
Forte (5)	\$440	\$317	\$252	\$193	\$117	\$60
Ovation/Bravo (6)	\$528	\$380	\$302	\$231	\$140	\$72
Encore (6) includes Tour Send-Off & Opening	\$565	\$417	\$327	\$253	\$162	\$72
Fanfare (12) includes Tour Send-Off & Opening	\$1,093	\$797	\$628	\$483	\$301	\$144
Full (24) includes Tour Send-Off & Opening	\$2,149	\$1,556	\$1,231	\$944	\$580	\$288
<b>SAT 8PM</b>						
Allegro (5)	\$440	\$317	\$252	\$193	\$117	\$60
Presto (7) includes Tour Send-Off & NYE	\$565	\$417	\$327	\$253	\$162	\$84
Vivace (7) includes Tour Send-Off & Opening	\$565	\$417	\$327	\$253	\$162	\$84
Staccato (11) includes Tour Send-Off & Opening	\$917	\$670	\$528	\$406	\$255	\$132
Full (18) includes Tour Send-Off, Opening & NYE	\$1,570	\$1,150	\$904	\$697	\$439	\$216

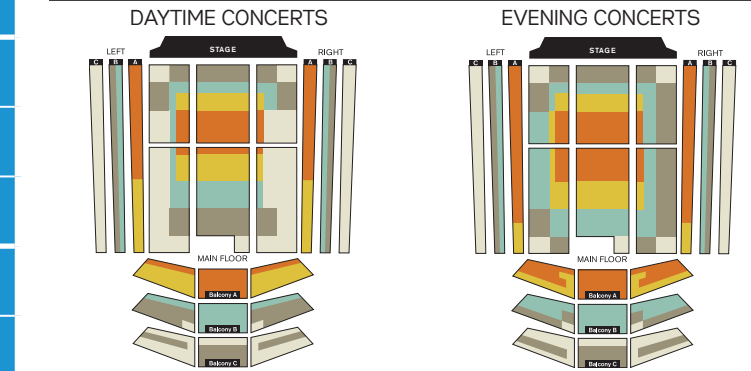
## EXCLUSIVE PRE-SALE OPTIONS

Tour Send-Off Concert Aug 16**	\$70	\$52	\$44	\$35	\$27	\$12
Season Opening Sep 22 & 23** Opening Dinner Sep 22 & 23	\$125	\$100	\$75	\$60	\$45	-
	\$250 (Atrium)		\$150 (Mezzanine)			
New Year's Eve Concert & Party**	\$125	\$100	\$75	\$60	\$45	-
New Year's Day Coffee Concert**	\$80	\$61	\$52	\$44	\$27	-

## ADD A MINI SERIES STARTING AT \$47

Inside the Classics (3)	\$81	(all sections, seating may vary by concert)				
Saturdays at Six (2)	\$146	\$101	\$77	\$47	\$47	\$24
Symphony in 60 (2)	\$54 (all sections, seating may vary by concert)					

## CLASSICAL SEATING CHARTS



\*Due to the unique nature of the Tour Send-Off concert, we cannot guarantee same seats for this performance. Tour tickets are not exchangeable for Season Opening or New Year's Eve.  
\*\*Price per ticket. These special concerts are only offered on select series packages. All other subscribers have the first opportunity to add these concerts to their series. We are holding great seats for you through July 28. Prices reflect subscriber discount when applicable.  
\*\*\*Prices reflect 20% (8-20% in VIP) discount and subject to change.  
All artists, programs, times, dates and prices are subject to change.

Creative Partner: CAPSULE Media Partner: StarTribune

[minnesotaorchestra.org/subscribe](http://minnesotaorchestra.org/subscribe)  
612.371.5642 • 1.800.292.4141